

**7** of the 8 pictures here from Lomira's past are related to one another in some way. They have something in common! Can you tell what that "something" is?

**1** of the 8 pictures does *not* fit with the others; it does not share the "something" that the others have in common. Can you tell which one of the pictures doesn't fit?



If you like puzzles like this, you'll *love*

## **History's Mysteries!**

Coming to the Lomira Municipal Complex

**Wednesday, April 3**

Sponsored by the Lomira QuadGraphics Community Library  
and the Friends of the Lomira Library



**1**

BAUMANN'S MEAT MARKET



GROGAN MOTORS

**2**



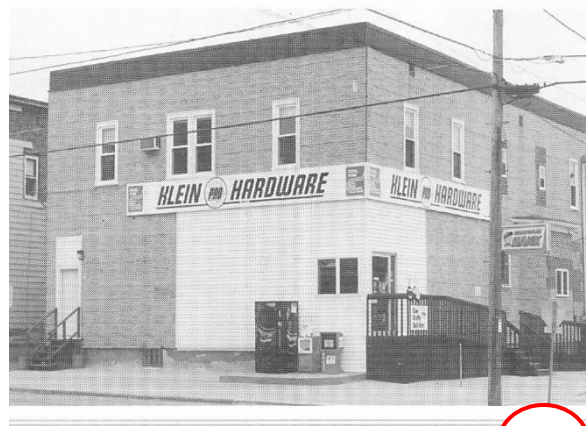
CELE'S RESTAURANT

**3**



BRATZ I. G. A. STORE

4



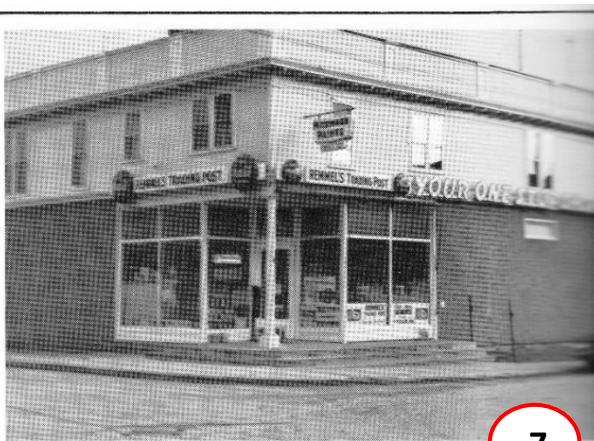
KLEIN HARDWARE

5



BLUE BAND FEEDS

6



REMMEL'S TRADING POST

7



KOEPSSELL'S DRUG STORE

8



Puzzle solution ("2019 Sample Solution") and additional information about the History's Mysteries event is available at the library or on the library website [www.lomira.lib.wi.us/friends-of-the-library/](http://www.lomira.lib.wi.us/friends-of-the-library/)